

5190-5195

TROUGH HOLE (ANNULAR) HEAVY CAPACITY LOAD CELLS

Annular compression load cell.

- Low profile for high capacity load cells
- Material : Stainless steel (5190) or nickel plated steel (5195)
- Protection IP 65
- Sturdy design
- Most important available options:
 - o Custom made dimensions
 - o High service temperature (180 °C)
 - o ATEX Ex ia IIC T6 to T4 certified (hazardous area)
 - o Redundant dual Wheatstone bridge
 - o Amplified output signal (0..10 V, 4..20 mA)
 - o Digital output signal (RS-232C, RS-485, USB, ...)



Model 5195 - 3 MN - F

The SENSY's load cells 5190-5195 are perfectly designed to the following applications :

- Pre-stressed rods measurement (concrete, snow, grounds, rocks...)
- Industrial force applications where space is limited
- Industrial weighing

CAPACITIES :

5190 - 5195 : 200 - 300 - 500 kN
 (0.75) - 1 - 1.5 - 2 - 3 - 5 MN
 5195 : 10 - 15 - 20 MN

TECHNICAL DATA		
Accuracy class		SL
Linearity error	% F.S.	< ± 0.5
Hysteresis error	% F.S.	< ± 0.5
Non - repeatability	% F.S.	< ± 0.25
Creep error over 30 min.	% F.S.	< ± 0.2
Zero shift after loading	% F.S.	< ± 0,05
Reference temperature	°C	23
Nominal temperature range	°C	- 10...+ 45
Service temperature range	°C	- 30...+ 70
Storage temperature range	°C	- 50...+ 85
Temperature coefficient of the sensitivity	% /10°C	< ± 0.1
Temperature coefficient of zero signal	% F.S./10°C	< ± 0.1
Nominal sensitivity	mV/V	1,5
Zero balance	mV/V	± 0.02
Sensitivity tolerance (g=9,8107 m/s²)	%	< ± 0.5
Input / Output resistance	Ohm	700 ± 5
Insulation resistance (50V)	MOhm	> 5000
Nominal excitation voltage	V	5 to 10
Nominal range of the excitation voltage	V	2...15
Safe load limit	% F.S.	200
Breaking load	% F.S.	> 300...500
Static lateral force limit	% F.S.	> 100
Permissible dynamic loading	% F.S.	70

F.S.: full scale Specifications subject to change without notice

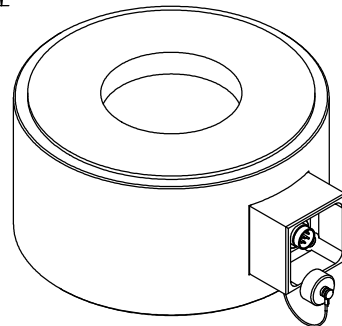
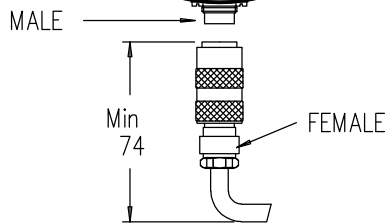
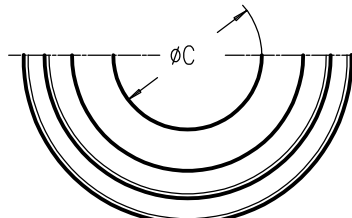
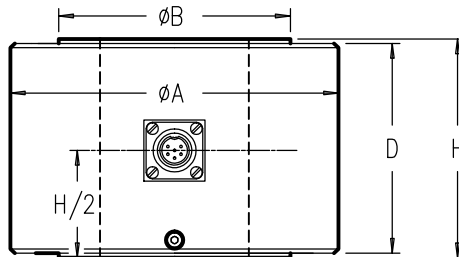
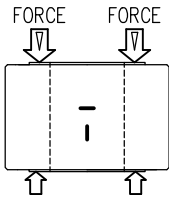
LOAD CELL

model 5190 stainless steel
 model 5195 alloy steel

COMPRESSION WASHER

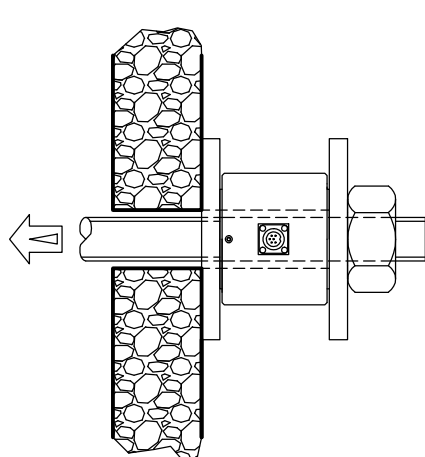
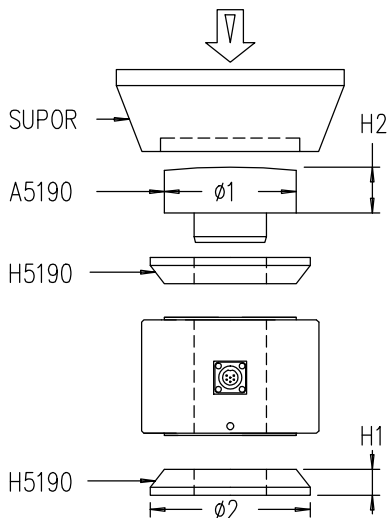


Range 200 kN– 20 MN IP65 Cable length : See table (CL)
 (20 - 2000 t.)

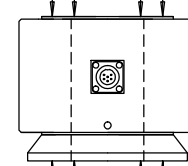


MODEL	CAPACITIES	$\phi A^{+0.1}$	ϕB	ϕC	D	H	H1	H2	$\phi 1$	$\phi 2$	Max.Deflexion	CL	Weight
5190-5195	200-300 kN	60	49	20	56	70	22	30	45	57	0.08 mm	3 m	1.4 kg
	500 kN	80	59	30	66	90	28	40	56	66	0.1 mm	6 m	3.2 kg
	0.75-1 MN	110	89	50	81	100	40	50	90	97	0.12 mm		5.5 kg
	1.5-2 MN	150	120	64	96	140	50	60	125	129	0.15 mm	12 m	17 kg
	3 MN	180	155	80	124	160	65	75	165	172	0.17 mm		26 kg
5 MN	230	200	105	150	190	75	90	200	225	0.2 mm	50 kg		
5195	10 MN	290	150	/	260	60	130	300	387	0.3 mm	20 m	100 kg	
	15 MN	340	165	/	290	80	150	350	480	0.34 mm		175 kg	
	20 MN	390	200	/	330	110	175	395	545	0.38 mm		260 kg	

Other dimensions $\phi A, \phi B$ and H on request

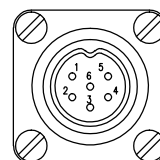


Pressure \leq or $=$ 30 kg/mm²



Pressure \leq or $=$ 20 kg/mm²

FEMALE-MALE CONNECTOR DIN 45322



- CONTACT N°
- 1 Excitation - Yellow
 - 2 Signal + Green
 - 3 Signal - White
 - 4 Excitation + Brown
 - 5 Sense - Grey
 - 6 Sense + Pink

Standard : Cable screen not connected to transducer
 Option f : Cable screen connected to transducer